

Existing Theater Available

Marla Chaliff
 (678) 322-1172
 Email: mchaliff@trilogygroup.net
 www.trilogygroup.net

JACKSON, MI

Mark Kaplan
 (678) 322-1176
 Email: mkaplan@trilogygroup.net
 www.trilogygroup.net

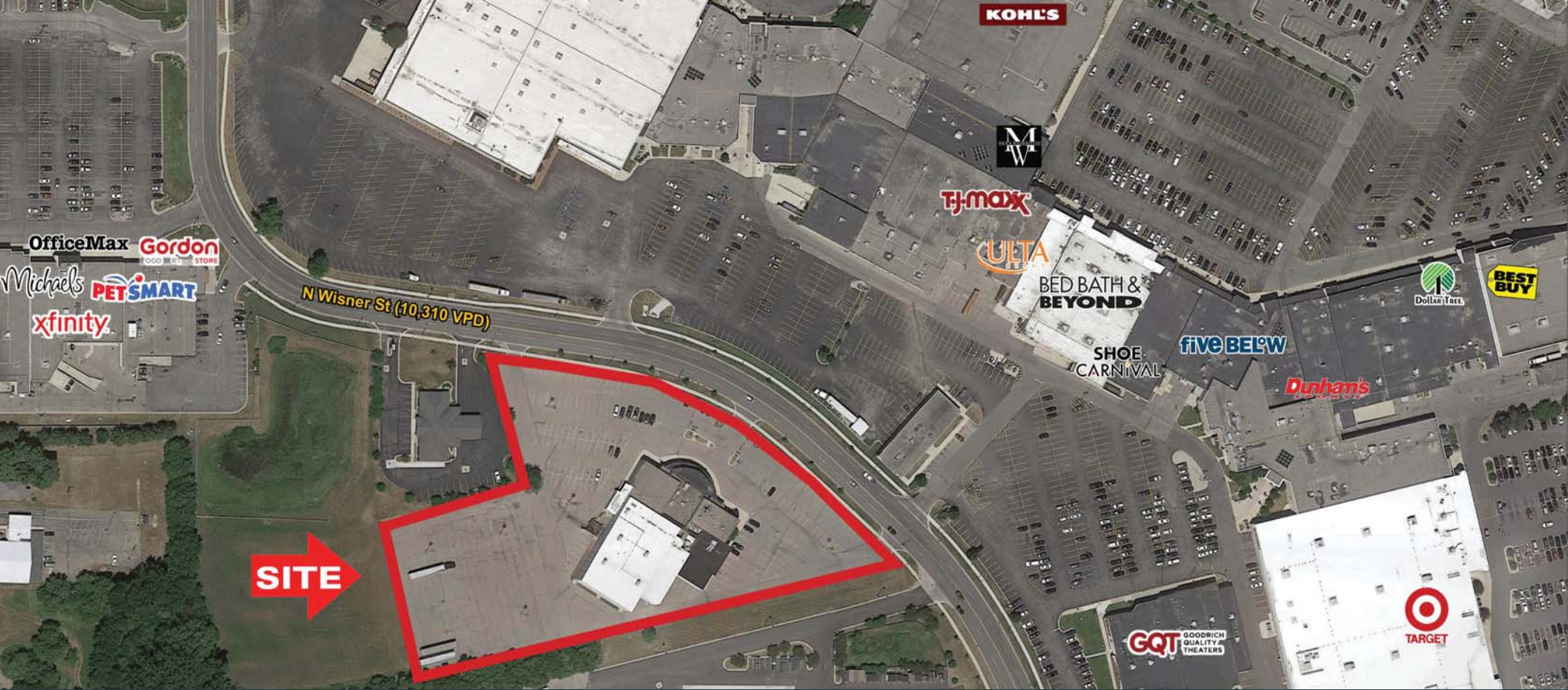


2020 DEMOGRAPHIC SUMMARY

	1-Mile	3-Mile	5-Mile
Est. Population	6,679	52,508	77,091
Average HH Income	\$ 48,963	\$ 53,036	\$ 60,804
Est. Households	3,313	21,888	31,156
Est. # of Employees	7,638	42,323	51,898

4.5 ACRES WITH +/- 31,386 SF 8 SCREEN THEATER AVAILABLE
 1700 N WISNER ST | JACKSON, MI





JACKSON, MI

1700 N WISNER ST

- 4.5 Acre site with a +/- 31,386 SF Eight Screen Theater
- Excellent Visibility along N Wisner St
- Surrounding Tenants Include Home Depot, Target, Lowe's, TJ Maxx, Kohl's, and more
- Strong Daytime Population with 54,817 employees within 5 miles
- Zoned C4 General Commercial District

